

SERVICE KIT NO. SK-120-2

DATE: MARCH 26, 1974

TITLE: CARBURETOR AIRBOX BEARING REPLACEMENT KIT

SERIALS AFFECTED: AA5-0071 AND ON

WEIGHT AND BALANCE CHANGE: NEGLIGIBLE

PARTS LIST

<u>QUANTITY</u>	<u>PART NUMBER</u>	<u>DESCRIPTION</u>
2	MS35489-7	Grommet
2	4L4-F	Nyliner

DESCRIPTION OF MODIFICATION

This Kit provides the material and instructions required to remove and replace carburetor airbox bearings. On AA5-0071 through AA5-0573 the original airbox bearing holes must be opened up to .745/.755 inch diameter to accept the improved design bearings. On AA5-0574 and on, the bearings are a direct replacement.

MODIFICATION INSTRUCTIONS

1. Remove airbox from aircraft.
2. Remove valve plate assembly.
3. Remove old bearings as follows:
 - a.) On AA5-0071 through AA5-0573, remove the bearing and bearing retaining collar that is swaged in each side of the airbox and discard (See Figure 2). Open up the remaining hole to .745/.755 inch diameter. Be sure hole centerlines are located as shown in Figure 1, to assure proper valve operation.
 - b.) On AA5-0574 and on, remove the original MS35489-7 grommets (2) and 4L4-F nyliners (2).
4. Install the new MS35489-7 grommets (2), and 4L4-F nyliners (2), as shown in Figure 3. Install the 4L4-F nyliners with the shoulder on the inside.
5. Reinstall the valve plate assembly. Use AN960-416 or AN960-416L washers between valve plate and nyliner as required, to insure clearance between valve and airbox.
6. Check the valve for proper operation, i.e. valve closes fully in both the carburetor heat "on" and "off" positions.
7. Reinstall airbox on aircraft (See Figure 4 for swivel fitting attachment).
8. Check swivel fitting on actuating arm for freedom of movement and valve for proper operation.

GRUMMAN AMERICAN AVIATION CORPORATION

JCP:jz

K
I
T

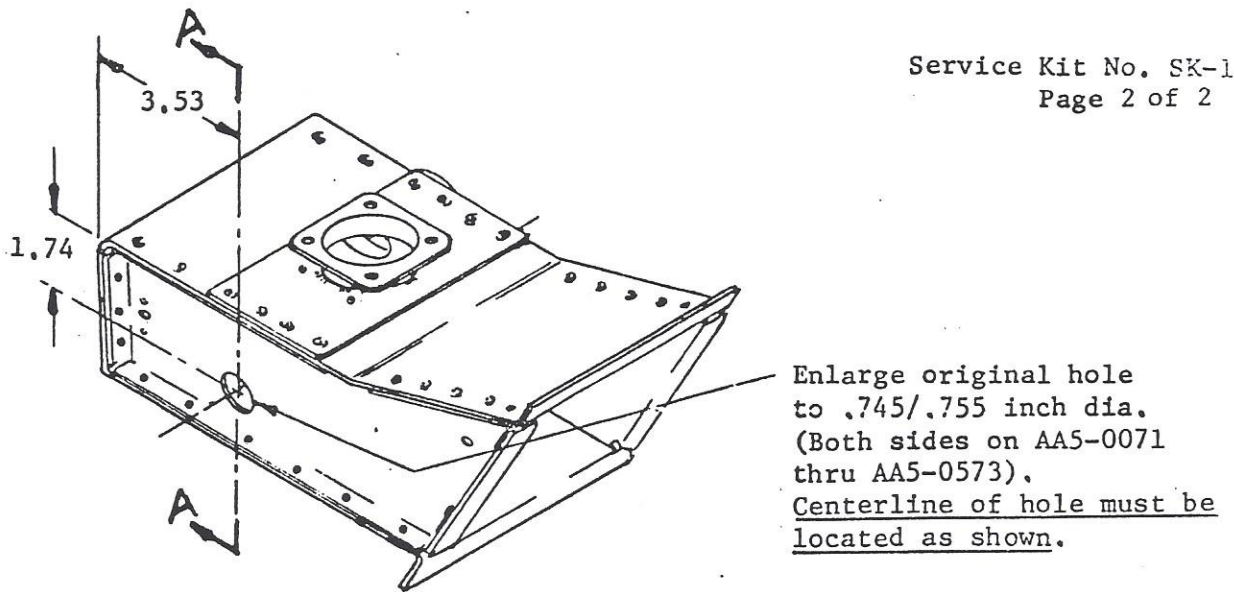


Figure 1. Airbox Bearing Hole location.

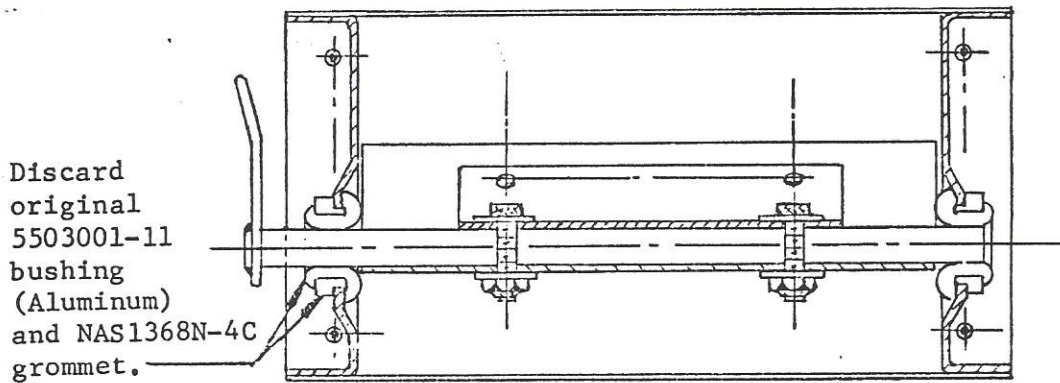


Figure 2. Section AA - Original Airbox Design with valve and bearings installed. (AA5-0071 thru AA5-0573)

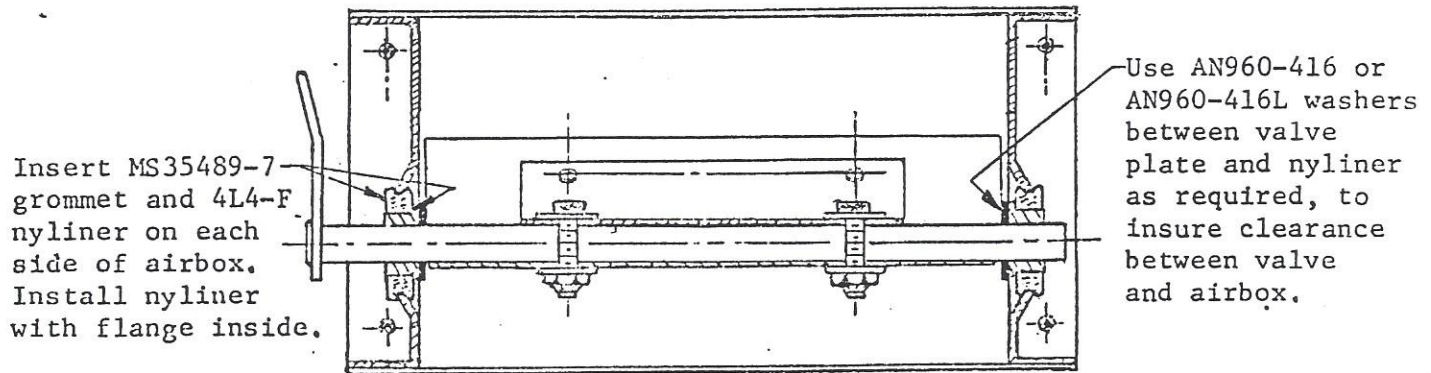


Figure 3. Section AA - Airbox with Valve and Bearings installed.

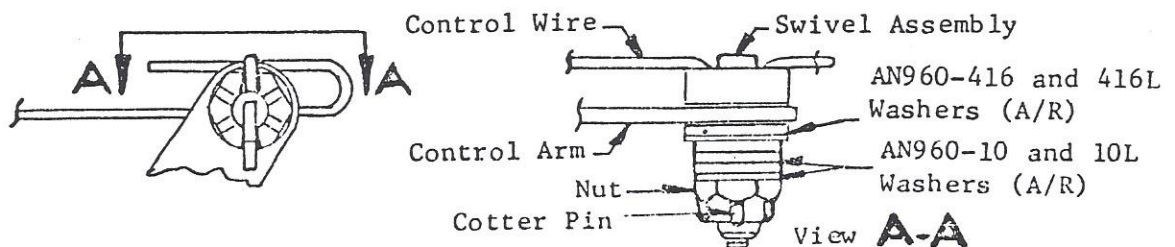


Figure 4. Swivel Fitting Attachment Details.